

FOR SALE

Black Lion Lane,
Hammersmith, W6

End of Terrace House
St Peter's Conservation Area

£1,200,000 fh

2  1  2 

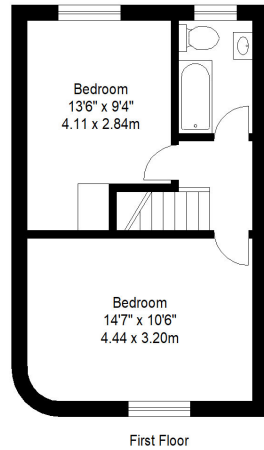
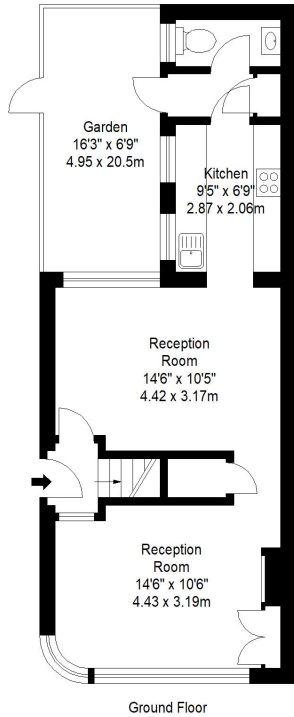


**horton
andgarton**

SALES / LETTINGS / PROPERTY MANAGEMENT

hortonandgarton.co.uk | Sales 020 8819 0510 | Lettings 020 8819 0511
172 King Street, Hammersmith, W6 0QU





Black Lion Lane, W6
Gross Internal Area 830 sq ft - 77.11 sqm

Drawn from supplied plans. All measurements are approximate.
This floor plan is for illustrative purposes only and is not to scale.
© Horton and Garton Estate Agents 2022

**horton
andgarton**



Grade II listed cottage | Two bedrooms - One bathroom
| 956 Sq' - 88 SqM | Two reception rooms | EPC rating
E | St Peter's Conservation Area



hortonandgarton.co.uk
Sales 020 8819 0510
Lettings 020 8819 0511

172 King Street, Hammersmith, W6 0QU