

FOR SALE

Belmont Terrace,
Chiswick, W4

Link Detached House
Chiswick

£1,195,000 fh

4  2  2 



**horton
andgarton**

SALES / LETTINGS / PROPERTY MANAGEMENT

hortonandgarton.co.uk | Sales 020 3989 6464 | Lettings 020 3989 5454
161 Chiswick High Road, London, W4 2DT



FOR SALE

Belmont Terrace,
Chiswick, W4

Link Detached House
Chiswick

£1,195,000 fh

4  2  2 



**horton
andgarton**

SALES / LETTINGS / PROPERTY MANAGEMENT

hortonandgarton.co.uk | Sales 020 3989 6464 | Lettings 020 3989 5454
161 Chiswick High Road, London, W4 2DT



FOR SALE

Belmont Terrace,
Chiswick, W4

Link Detached House
Chiswick

£1,195,000 fh

4  2  2 

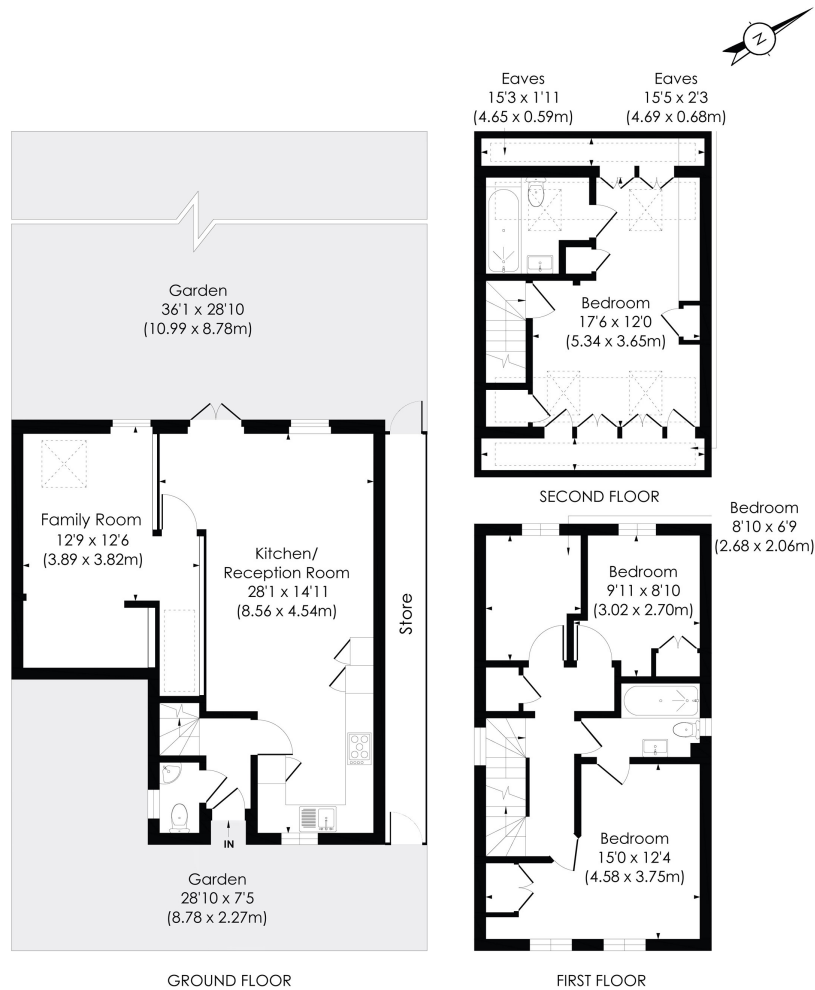


**horton
andgarton**

SALES / LETTINGS / PROPERTY MANAGEMENT

hortonandgarton.co.uk | Sales 020 3989 6464 | Lettings 020 3989 5454
161 Chiswick High Road, London, W4 2DT





BELMONT TERRACE, W4

Approx. Gross Internal Floor Area
1411 Sq'/131 SqM (Including Reduced Height & Store)
1184 Sq'/110 SqM (Excluding Reduced Height & Store)



© Pixangle Property Marketing Ltd. info@pixangle.com Tel: 0208 870 2118
 This floor plan has been prepared for the purpose of illustration only in accordance with the latest RICS code of measuring practice and is not to scale. All measurements and areas are approximate and whilst every effort has been made to ensure the accuracy of the plan contained here, no responsibility is taken for any error, omission or misstatement.



Family house | Four bedrooms - Two bathrooms | 1411 Sq' - 131 SqM | 36' West facing garden | EPC rating D | Turnham Green



hortonandgarton.co.uk
 Sales 020 3989 6464
 Lettings 020 3989 5454

161 Chiswick High Road, London, W4 2DT