

# FOR SALE

---

Bradmore Park Road,  
Hammersmith, W6

---

Terraced House  
Brackenbury Village

---

£1,250,000 fh

---

3  1  2 

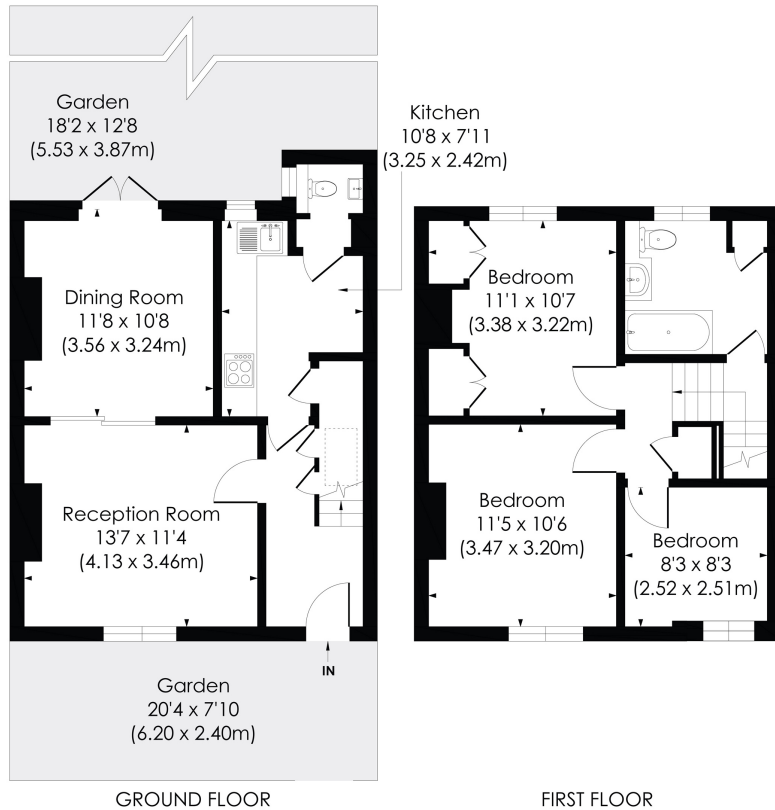


**horton  
andgarton**

SALES / LETTINGS / PROPERTY MANAGEMENT

hortonandgarton.co.uk | Sales 020 8819 0510 | Lettings 020 8819 0511  
172 King Street, Hammersmith, W6 0QU





Victorian house | Three bedrooms - One bathroom | 901 Sq' - 83.68 SqM | West facing courtyard garden | EPC rating D | Brackenbury Village



hortonandgarton.co.uk  
Sales 020 8819 0510  
Lettings 020 8819 0511

172 King Street, Hammersmith, W6 0QU



© Pixangle Property Marketing Ltd. info@pixangle.com Tel: 0208 870 2118  
This floor plan has been prepared for the purpose of illustration only in accordance with the latest RICS code of measuring practice and is not to scale. All measurements and areas are approximate and whilst every effort has been made to ensure the accuracy of the plan contained here, no responsibility is taken for any error, omission or misstatement.

**BRADMORE PARK ROAD, W6**  
Approx. Gross Internal Floor Area  
**901 Sq' / 83.68 SqM**