

TO  
LET

---

Carthew Road,  
Brackbury Village, W6

---

Terraced House  
Brackbury Village

---

£725 p/w

---

2  1  2 

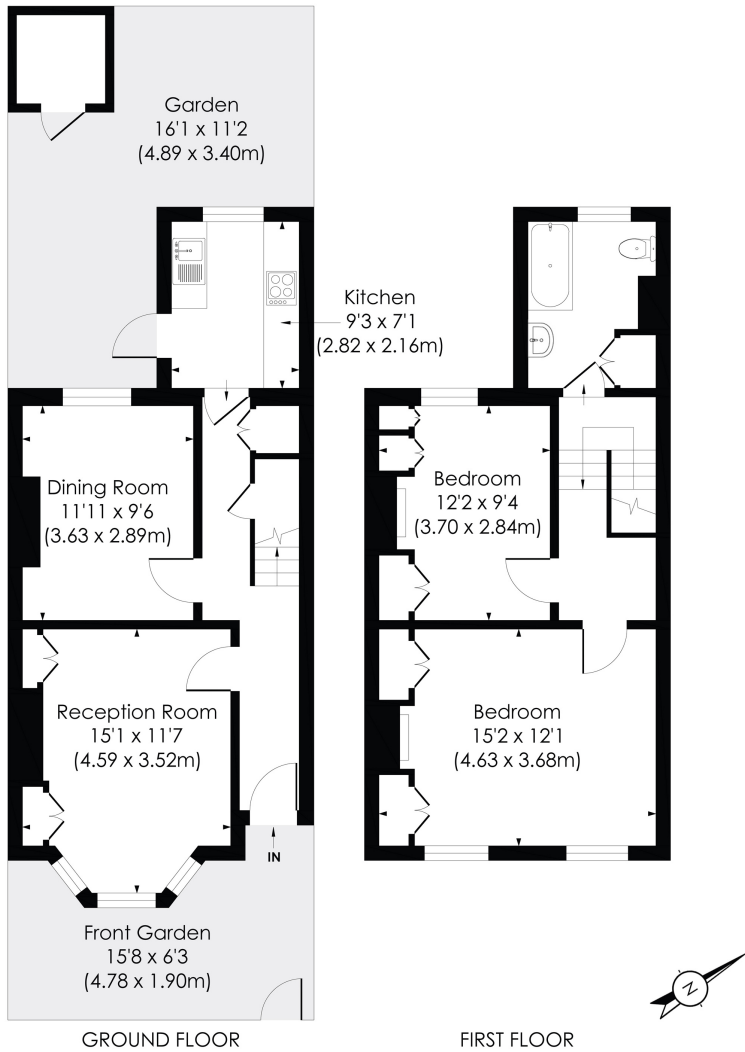


**horton  
andgarton**

SALES / LETTINGS / PROPERTY MANAGEMENT

hortonandgarton.co.uk | Sales 020 8819 0510 | Lettings 020 8819 0511  
172 King Street, Hammersmith, W6 0QU





**CARTHEW ROAD, W6**

Approx. Gross Internal Floor Area  
**906 Sq' / 84.21 SqM**



This floor plan has been prepared for the purpose of illustration only in accordance with the latest RICS code of measuring practice and is not to scale. All measurements and areas are approximate and whilst every effort has been made to ensure the accuracy of the plan contained here, no responsibility is taken for any error, omission or misstatement.



Two bedroom house | Newly refurbished throughout |  
 Modern fixtures and fittings | Unfurnished | EPC rating  
 D | Brackenbury Village



hortonandgarton.co.uk  
 Sales 020 8819 0510  
 Lettings 020 8819 0511

172 King Street, Hammersmith, W6 0QU