

# FOR SALE

---

Becklow Road,  
Shepherd's Bush, W12

---

Flat  
Askew Village

---

£450,000 lh

---

2  1  1 

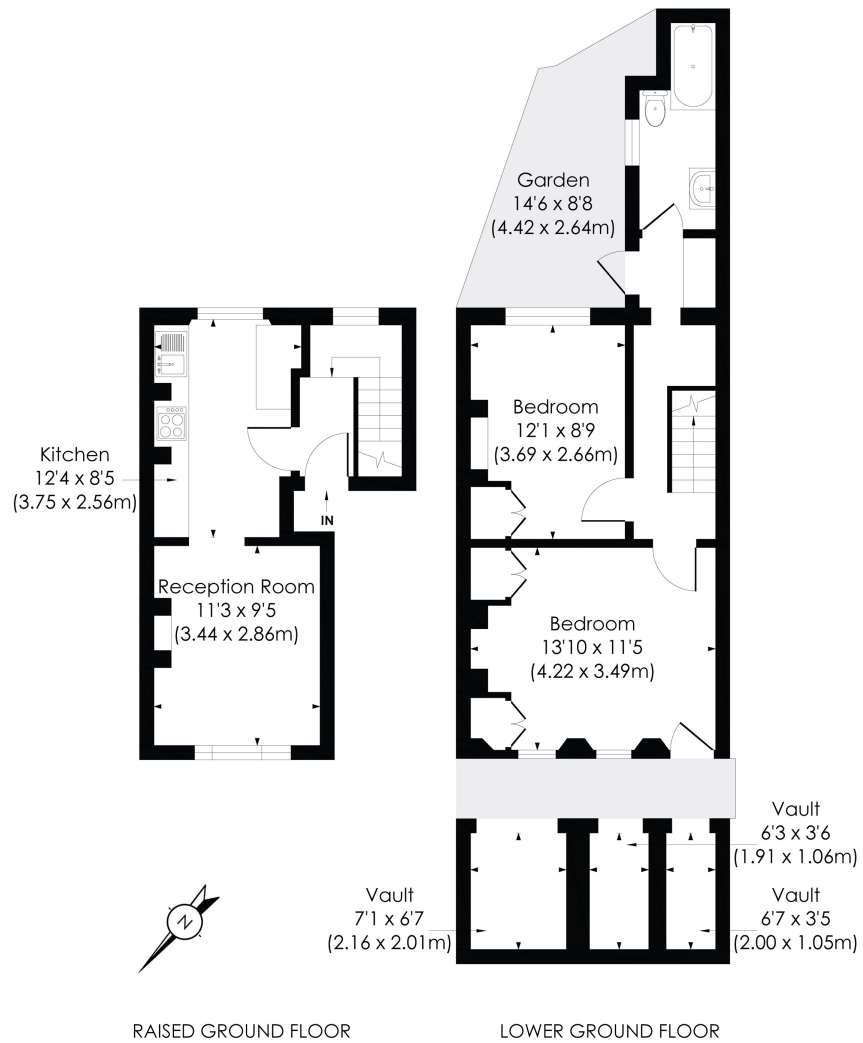


**horton  
andgarton**

SALES / LETTINGS / PROPERTY MANAGEMENT

hortonandgarton.co.uk | Sales 020 8819 0510 | Lettings 020 8819 0511  
172 King Street, Hammersmith, W6 0QU





**BECKLOW ROAD, W12**

Approx. Gross Internal Floor Area

**654 Sq' / 60.75 SqM** (Excluding Vault Storage)

**horton  
andgarton**

© Pixangle Property Marketing Ltd. info@pixangle.com Tel: 0208 870 2118

This floor plan has been prepared for the purpose of illustration only in accordance with the latest RICS code of measuring practice and is not to scale. All measurements and areas are approximate and whilst every effort has been made to ensure the accuracy of the plan contained here, no responsibility is taken for any error, omission or misstatement.



Spacious maisonette | Two bedroom - One bathroom |  
654 Sq' - 60.75 SqM | Superb condition throughout |  
EPC rating C | Askew Village



hortonandgarton.co.uk

Sales 020 8819 0510

Lettings 020 8819 0511

172 King Street, Hammersmith, W6 0QU