

# FOR SALE

---

Overstone Road,  
Hammersmith, W6

---

Flat  
Brackenbury Village

---

£425,000 lh

---

1  1  1 

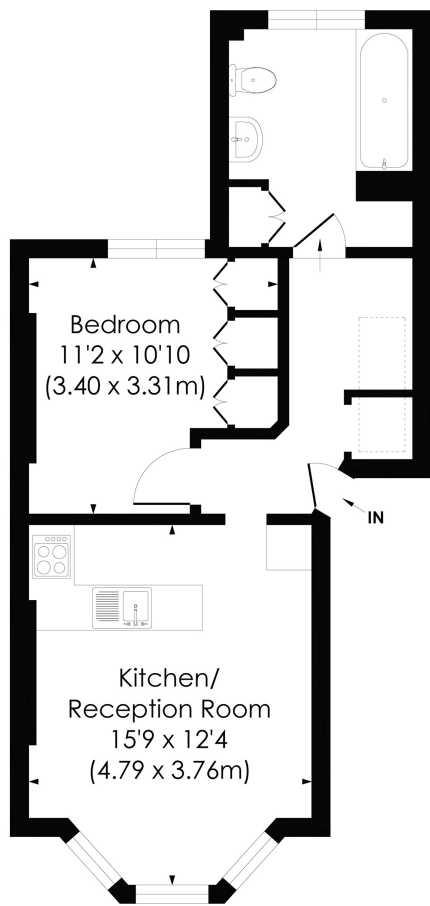


**horton  
andgarton**

SALES / LETTINGS / PROPERTY MANAGEMENT

hortonandgarton.co.uk | Sales 020 8819 0510 | Lettings 020 8819 0511  
172 King Street, Hammersmith, W6 0QU





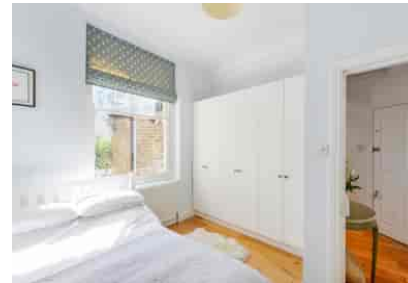
GROUND FLOOR

**OVERSTONE ROAD, W6**  
 Approx. Gross Internal Floor Area  
**450 Sq' / 41.83 SqM**



© Pixangle Property Marketing Ltd. info@pixangle.com Tel: 0208 870 2118

This floor plan has been prepared for the purpose of illustration only in accordance with the latest RICS code of measuring practice and is not to scale. All measurements and areas are approximate and whilst every effort has been made to ensure the accuracy of the plan contained here, no responsibility is taken for any error, omission or misstatement.



Victorian conversion flat | One bedroom - One bathroom  
 | 450 Sq' - 41.83 SqM | Modern and stylish decor  
 throughout | EPC rating C | Brackenbury Village



hortonandgarton.co.uk  
 Sales 020 8819 0510  
 Lettings 020 8819 0511

172 King Street, Hammersmith, W6 0QU