

FOR SALE

Overstone Road,
Hammersmith, W6

Terraced House
Brackenbury Village

£1,750,000 fh

4  2  2 



**horton
andgarton**

SALES / LETTINGS / PROPERTY MANAGEMENT

hortonandgarton.co.uk | Sales 020 8819 0510 | Lettings 020 8819 0511
172 King Street, Hammersmith, W6 0QU



FOR SALE

Overstone Road,
Hammersmith, W6

Terraced House
Brackenbury Village

£1,750,000 fh

4  2  2 



**horton
andgarton**

SALES / LETTINGS / PROPERTY MANAGEMENT

hortonandgarton.co.uk | Sales 020 8819 0510 | Lettings 020 8819 0511
172 King Street, Hammersmith, W6 0QU



FOR SALE

Overstone Road,
Hammersmith, W6

Terraced House
Brackenbury Village

£1,750,000 fh

4  2  2 

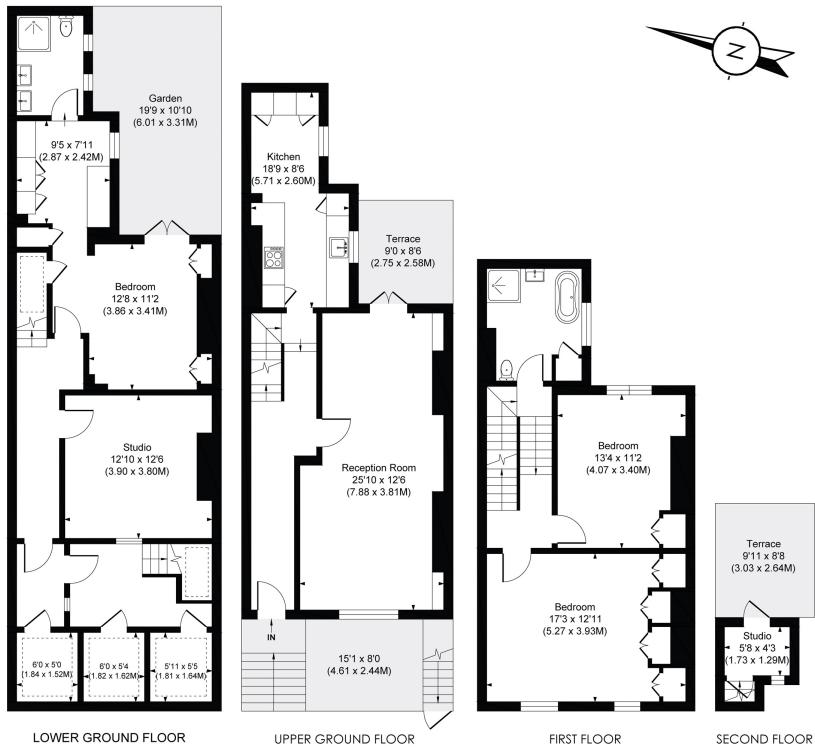


**horton
andgarton**

SALES / LETTINGS / PROPERTY MANAGEMENT

hortonandgarton.co.uk | Sales 020 8819 0510 | Lettings 020 8819 0511
172 King Street, Hammersmith, W6 0QU





Victorian family house | Four bedrooms - Two bathrooms | 1726 Sq' - 163.75 Sq M | Superb condition throughout | EPC rating D | Brackenbury Village



hortonandgarton.co.uk
 Sales 020 8819 0510
 Lettings 020 8819 0511

172 King Street, Hammersmith, W6 0QU



© Pixangle Property Marketing Ltd. info@pixangle.com Tel: 0208 870 2118

This floor plan has been prepared for the purpose of illustration only in accordance with the latest RICS code of measuring practice and is not to scale. All measurements and areas are approximate and whilst every effort has been made to ensure the accuracy of the plan contained here, no responsibility is taken for any error, omission or misstatement.

OVERSTONE ROAD, W6
 Approx. Gross Internal Floor Area
1863 Sq' / 173.12 SqM (Incl. RHH)
1726 Sq' / 163.75 SqM (Excl. RHH)