

# TO LET

---

Lord Napier Place,  
Hammersmith Riverside, W6

---

Town House  
Hammersmith Riverside

---

£4,000 pcm

---

4  2  1 

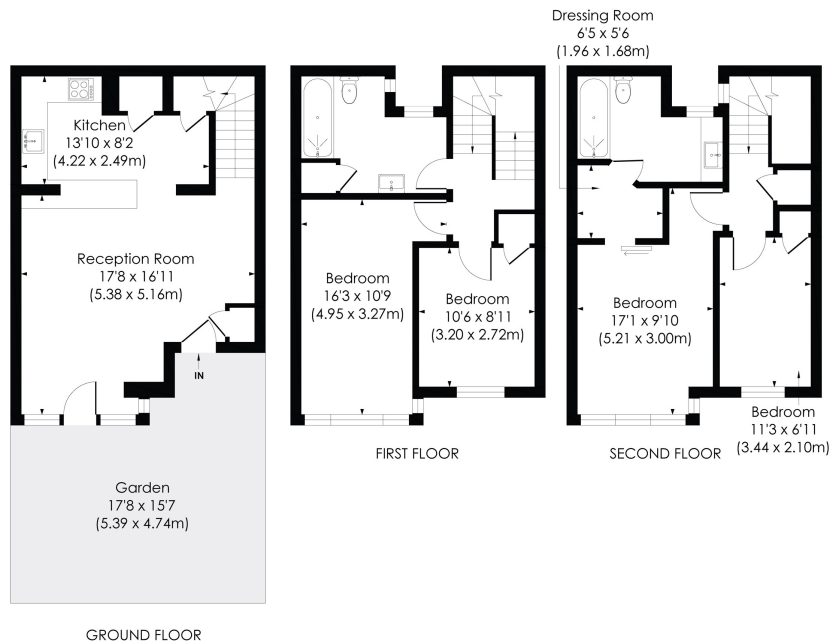


**horton  
andgarton**

SALES / LETTINGS / PROPERTY MANAGEMENT

hortonandgarton.co.uk | Sales 020 8819 0510 | Lettings 020 8819 0511  
172 King Street, Hammersmith, W6 0QU





**LORD NAPIER PLACE, W6**

Approx. Gross Internal Floor Area  
**1243 Sq' / 115.48 SqM**

**horton  
andgarton**

© Pixangle Property Marketing Ltd. info@pixangle.com Tel: 0208 870 2118

This floor plan has been prepared for the purpose of illustration only in accordance with the latest RICS code of measuring practice and is not to scale. All measurements and areas are approximate and whilst every effort has been made to ensure the accuracy of the plan contained here, no responsibility is taken for any error, omission or misstatement.



Four bedroom townhouse | Two bathrooms | Modern and stylish decor throughout | Part-furnished | EPC rating C | Riverside



hortonandgarton.co.uk  
 Sales 020 8819 0510  
 Lettings 020 8819 0511

172 King Street, Hammersmith, W6 0QU