

# FOR SALE

---

Sharp House, Goldhawk Road,  
Shepherd's Bush, W12

---

Flat  
West London

---

£950,000 lh

---

2  2  1 



**horton  
andgarton**

SALES / LETTINGS / PROPERTY MANAGEMENT

hortonandgarton.co.uk | Sales 020 8819 0510 | Lettings 020 8819 0511  
172 King Street, Hammersmith, W6 0QU



# FOR SALE

---

Sharp House, Goldhawk Road,  
Shepherd's Bush, W12

---

Flat  
West London

---

£950,000 lh

---

2  2  1 



**horton  
andgarton**

SALES / LETTINGS / PROPERTY MANAGEMENT

hortonandgarton.co.uk | Sales 020 8819 0510 | Lettings 020 8819 0511  
172 King Street, Hammersmith, W6 0QU



# FOR SALE

Sharp House, Goldhawk Road,  
Shepherd's Bush, W12

Flat  
West London

£950,000 lh

2  2  1 

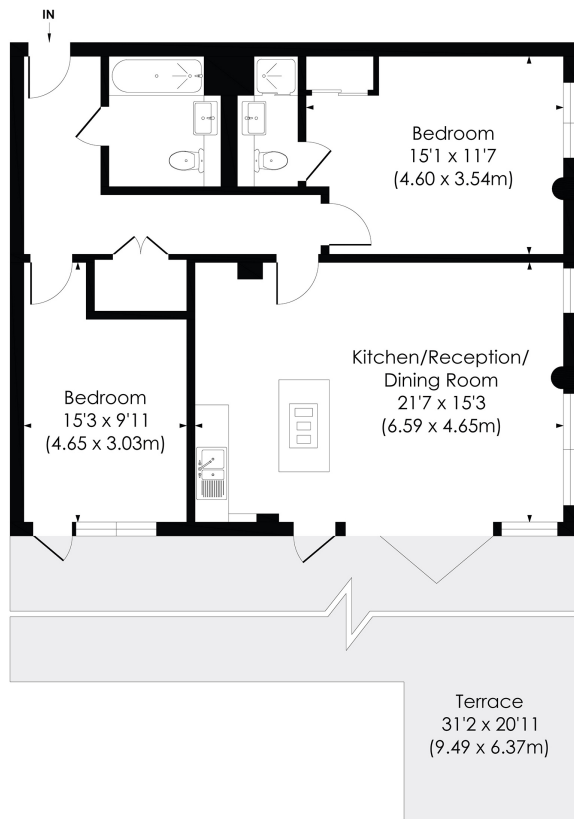


**horton  
andgarton**

SALES / LETTINGS / PROPERTY MANAGEMENT

hortonandgarton.co.uk | Sales 020 8819 0510 | Lettings 020 8819 0511  
172 King Street, Hammersmith, W6 0QU





FIFTH FLOOR



**GOLDHAWK ROAD, W12**

Approx. Gross Internal Floor Area

**865 Sq'/80.38 SqM**

**horton  
andgarton**

© Pixangle Property Marketing Ltd. info@pixangle.com Tel: 0208 870 2118

This floor plan has been prepared for the purpose of illustration only in accordance with the latest RICS code of measuring practice and is not to scale. All measurements and areas are approximate and whilst every effort has been made to ensure the accuracy of the plan contained here, no responsibility is taken for any error, omission or misstatement.



Penthouse style apartment | Two bedrooms - Two bathrooms | 872 Sq' - 81 SqM | 30'9 x 21' 8 South facing roof terrace | EPC rating B | Shepherd's Bush



hortonandgarton.co.uk

Sales 020 8819 0510

Lettings 020 8819 0511

172 King Street, Hammersmith, W6 0QU