

# FOR SALE

---

Hamlet Gardens,  
Hammersmith, W6

---

Flat  
Ravenscourt Park

---

£650,000 sh of fh

---

2  1  1 



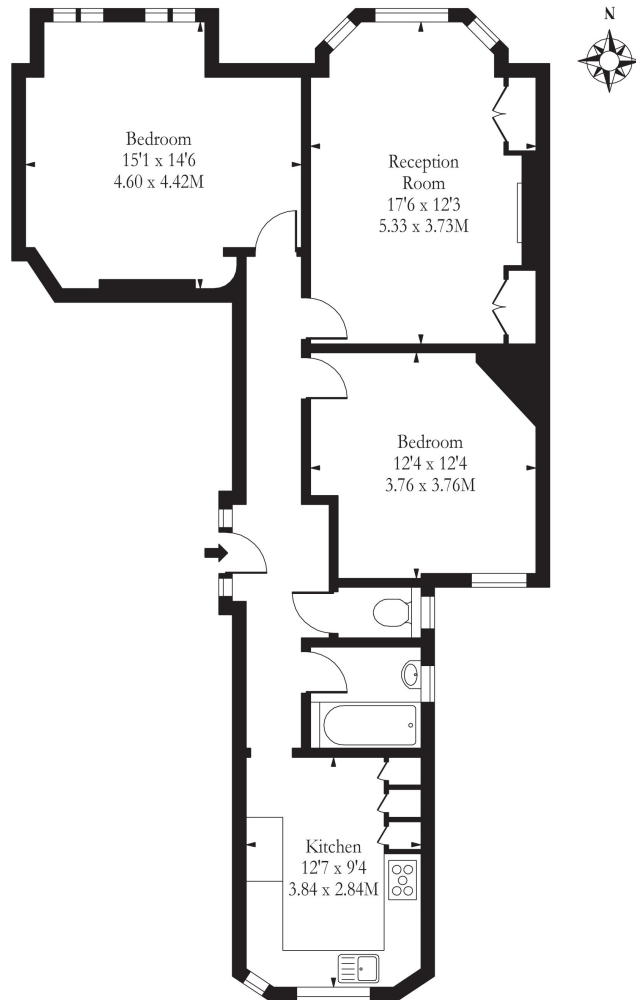
**horton  
andgarton**

SALES / LETTINGS / PROPERTY MANAGEMENT

hortonandgarton.co.uk | Sales 020 8819 0510 | Lettings 020 8819 0511  
172 King Street, Hammersmith, W6 0QU



## Hamlet Gardens, W6



Lower Ground Floor

**Approx Gross Internal Area 827 Sq Ft - 76.83 Sq M**

Illustration Purposes Only

Whilst every attempt has been made to ensure the accuracy of the floor plan contained here, measurements of doors, windows, rooms and any other items are approximate and no responsibility is taken for any errors, omissions or mis-statements. The plan is for illustrative purposes only, is not to scale and should be used as such by any prospective purchaser.



hortonandgarton



Victorian mansion block | Two bedrooms - One bathroom | 827 Sq' - 77 SqM | No chain | EPC rating D | Ravenscourt Park



hortonandgarton.co.uk  
Sales 020 8819 0510  
Lettings 020 8819 0511

172 King Street, Hammersmith, W6 0QU