

TO
LET

Devonport Road,
Shepherds Bush, W12

Semi-Detached House
Shepherds Bush

£1,846 p/w

4  3  2 

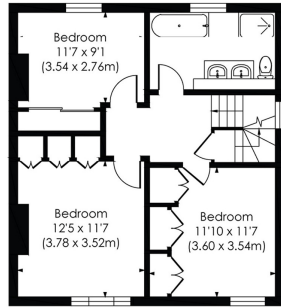


**horton
andgarton**

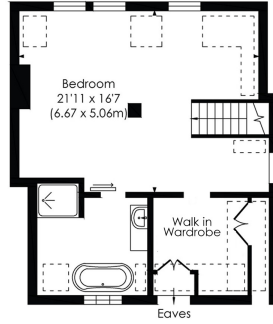
SALES / LETTINGS / PROPERTY MANAGEMENT

hortonandgarton.co.uk | Sales 020 8819 0510 | Lettings 020 8819 0511
172 King Street, Hammersmith, W6 0QU

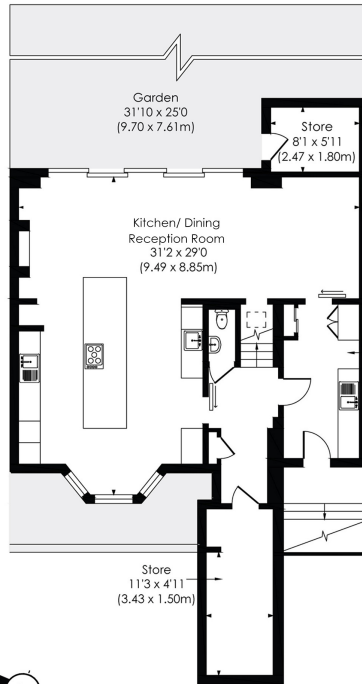




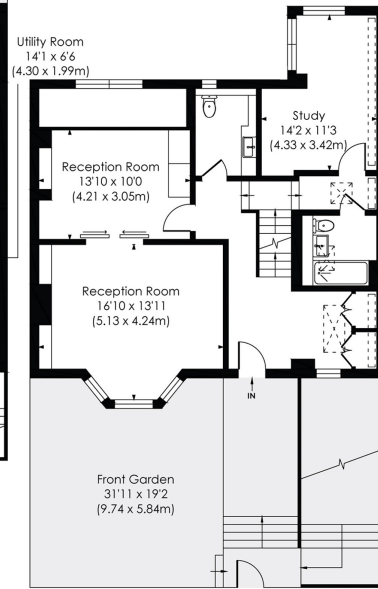
FIRST FLOOR



SECOND FLOOR



LOWER GROUND FLOOR



RAISED GROUND FLOOR

DEVONPORT ROAD, W12

Approx. Gross Internal Floor Area
2999 Sq'/278.61 SqM (Including Reduced Height)
2861 Sq'/265.83 SqM (Excluding Reduced Height)
 © Pixangle Property Marketing Ltd. info@pixangle.com Tel: 0208 870 2118

This floor plan has been prepared for the purpose of illustration only in accordance with the latest RICS code of measuring practice and is not to scale. All measurements and areas are approximate and whilst every effort has been made to ensure the accuracy of the plan contained here, no responsibility is taken for any error, omission or misstatement.



Four bedroom semi-detached house | Additional study / office | Immaculate condition throughout and turnkey | Furnished or unfurnished | EPC rating C | Shepherds Bush



hortonandgarton.co.uk
 Sales 020 8819 0510
 Lettings 020 8819 0511

172 King Street, Hammersmith, W6 0QU