

TO  
LET

---

Wood Lane,  
White City Living, W12

---

Flat  
White City Living

---

£3,700 pcm

---

2  2  1 



**horton  
andgarton**

SALES / LETTINGS / PROPERTY MANAGEMENT

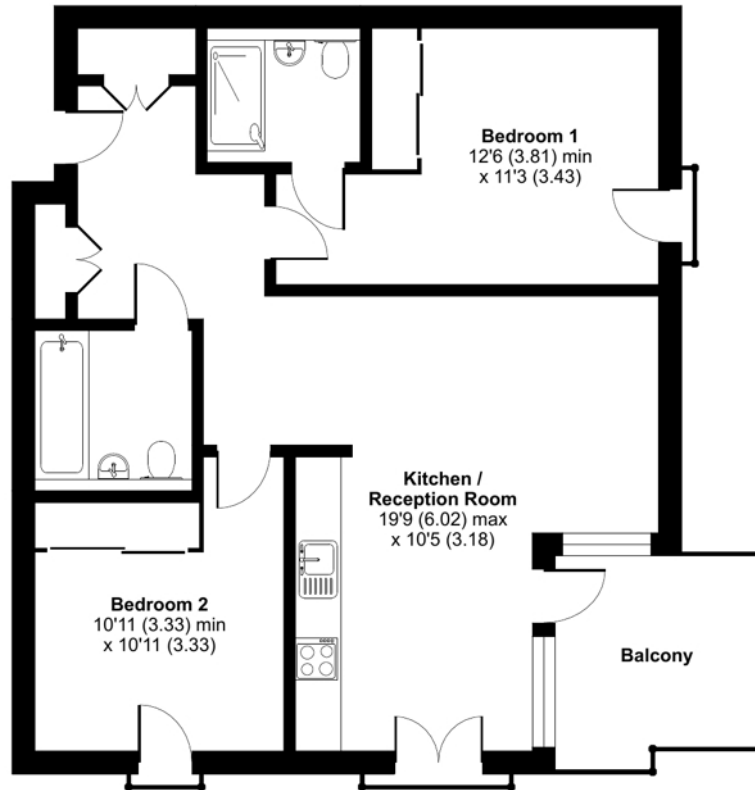
[hortonandgarton.co.uk](https://hortonandgarton.co.uk) | Sales 020 8819 0510 | Lettings 020 8819 0511  
172 King Street, Hammersmith, W6 0QU



# Woodlane, White City Living, London, W12

Approximate Area = 790 sq ft / 73.4 sq m

For identification only - Not to scale



FIRST FLOOR



Two double bedroom flat | Private balcony | Brand new development | Furnished | EPC rating B | White City



hortonandgarton.co.uk  
Sales 020 8819 0510  
Lettings 020 8819 0511

172 King Street, Hammersmith, W6 0QU



Floor plan produced in accordance with RICS Property Measurement Standards incorporating International Property Measurement Standards (IPMS2 Residential). © nichecom 2023. Produced for Residential Properties Investments LTD to Complete RPI. REF: 1042501