

# FOR SALE

---

Thorney Hedge Road,  
Chiswick, W4

---

Flat  
Gunnarsbury

---

£550,000 sh of fh

---

2  1  1 

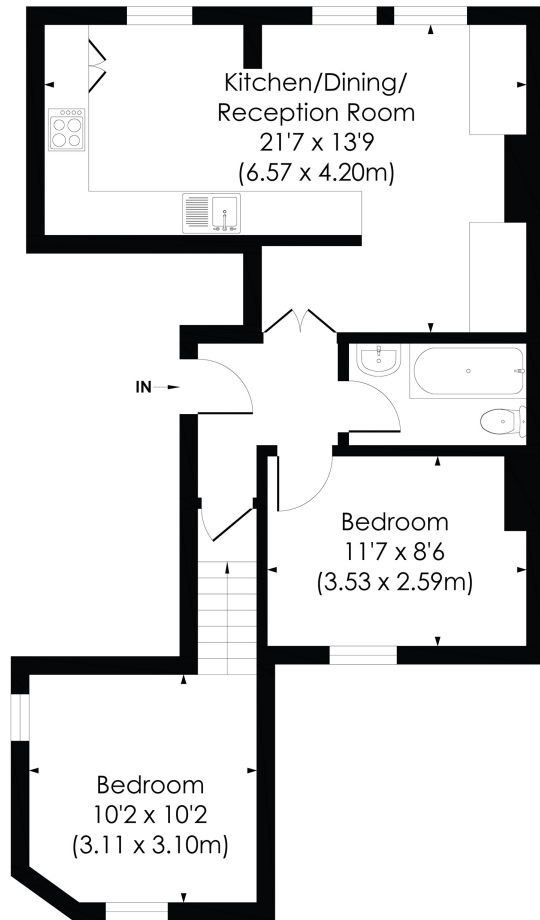


**horton  
andgarton**

SALES / LETTINGS / PROPERTY MANAGEMENT

hortonandgarton.co.uk | Sales 020 3989 6464 | Lettings 020 3989 5454  
161 Chiswick High Road, London, W4 2DT





**THORNEY HEDGE ROAD, W4**

Approx. Gross Internal Floor Area

**565 Sq' / 52.51 SqM**

**horton  
andgarton**

© Pixangle Property Marketing Ltd. info@pixangle.com Tel: 0208 870 2118

This floor plan has been prepared for the purpose of illustration only in accordance with the latest RICS code of measuring practice and is not to scale. All measurements and areas are approximate and whilst every effort has been made to ensure the accuracy of the plan contained here, no responsibility is taken for any error, omission or misstatement.



First floor flat | Two bedrooms - One bathroom | 565 Sq' - 52.51 SqM | Superbly presented | EPC rating D | Gunnersbury



hortonandgarton.co.uk

Sales 020 3989 6464

Lettings 020 3989 5454

161 Chiswick High Road, London, W4 2DT