

# FOR SALE

---

Cobbold Road,  
Shepherd's Bush, W12

---

Garden Flat  
Wendell Park

---

£375,000 sh of fh

---

1  1  1 

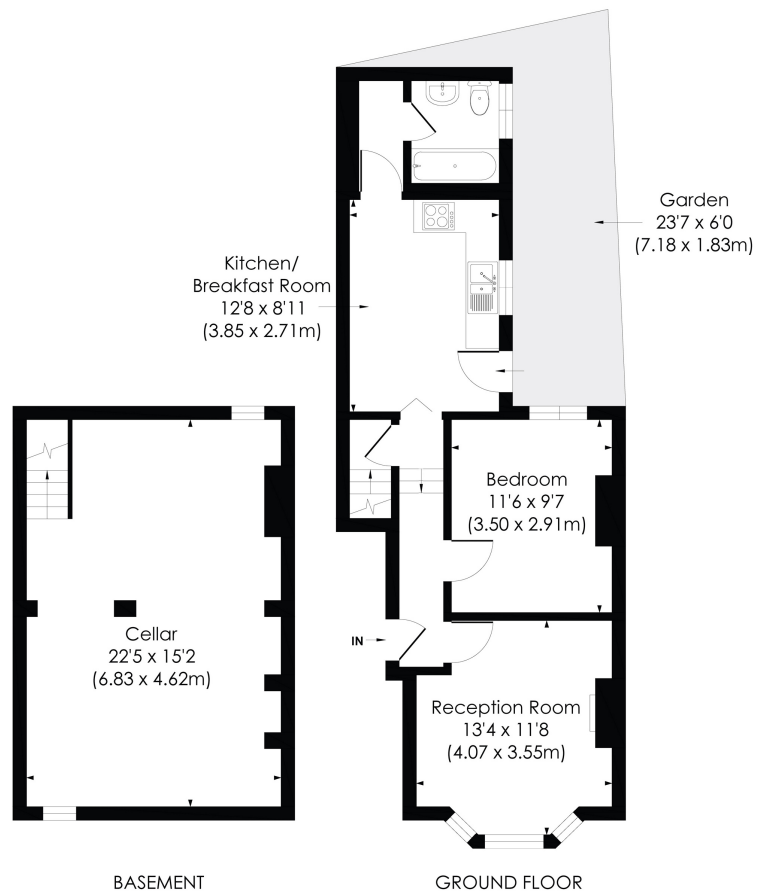


**horton  
andgarton**

SALES / LETTINGS / PROPERTY MANAGEMENT

hortonandgarton.co.uk | Sales 020 8819 0510 | Lettings 020 8819 0511  
172 King Street, Hammersmith, W6 0QU





**COBBOLD ROAD, W12**

Approx. Gross Internal Floor Area

**821 Sq' / 76.26 SqM (Including Cellar)**

**481 Sq' / 44.71 SqM (Excluding Cellar)**

© Pixangle Property Marketing Ltd. info@pixangle.com Tel: 0208 870 2118

This floor plan has been prepared for the purpose of illustration only in accordance with the latest RICS code of measuring practice and is not to scale. All measurements and areas are approximate and whilst every effort has been made to ensure the accuracy of the plan contained here, no responsibility is taken for any error, omission or misstatement.

**horton  
andgarton**



Victorain conversion garden flat | One bedroom - One bathroom | 481 Sq' - 44.71 SqM | Fashionably unmodernised | EPC rating D | Wendell Park



hortonandgarton.co.uk

Sales 020 8819 0510

Lettings 020 8819 0511

172 King Street, Hammersmith, W6 0QU