

# FOR SALE

---

Metropolitan House  
Brentford, TW8

---

Apartment  
Brentford

---

£350,000 lh

---

1  1  1 

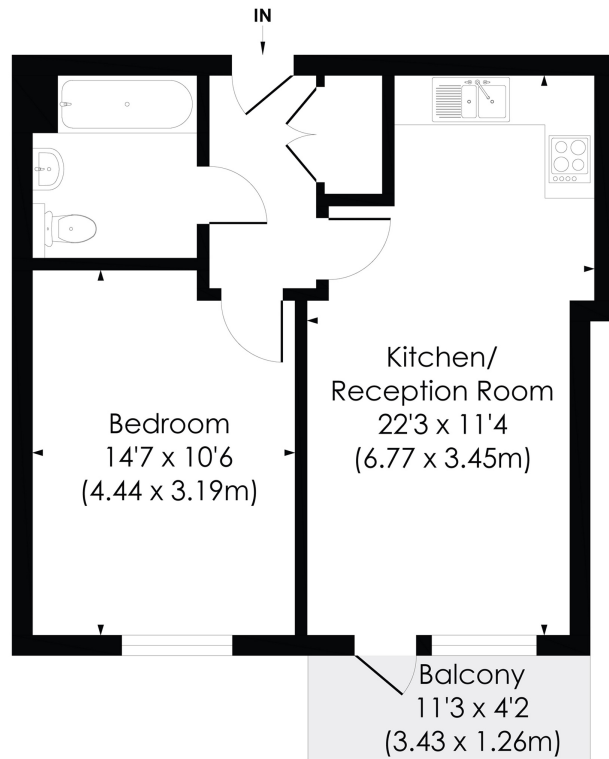


**horton  
andgarton**

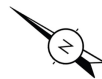
SALES / LETTINGS / PROPERTY MANAGEMENT

hortonandgarton.co.uk | Sales 020 3989 6464 | Lettings 020 3989 5454  
161 Chiswick High Road, London, W4 2DT





FIRST FLOOR



**PUMP HOUSE CRESCENT, TW8**

Approx. Gross Internal Floor Area

**483 Sq'/44.91 SqM**



© Pixangle Property Marketing Ltd. info@pixangle.com Tel: 0208 870 2118

This floor plan has been prepared for the purpose of illustration only in accordance with the latest RICS code of measuring practice and is not to scale. All measurements and areas are approximate and whilst every effort has been made to ensure the accuracy of the plan contained here, no responsibility is taken for any error, omission or misstatement.



Modern build apartment with lift access | One bedroom - One Bathroom | 483 Sq' - 44.91 SqM | South west facing balcony | EPC rating C | Kew



hortonandgarton.co.uk

Sales 020 3989 6464

Lettings 020 3989 5454

161 Chiswick High Road, London, W4 2DT