

FOR SALE

Percy Road,
Shepherd's Bush, W12

Character Property
Askew Village

£700,000 sh of fh

2  2  2 



**horton
andgarton**

SALES / LETTINGS / PROPERTY MANAGEMENT

hortonandgarton.co.uk | Sales 020 8819 0510 | Lettings 020 8819 0511
172 King Street, Hammersmith, W6 0QU



Percy Road, W12

Approximate Gross Internal Area

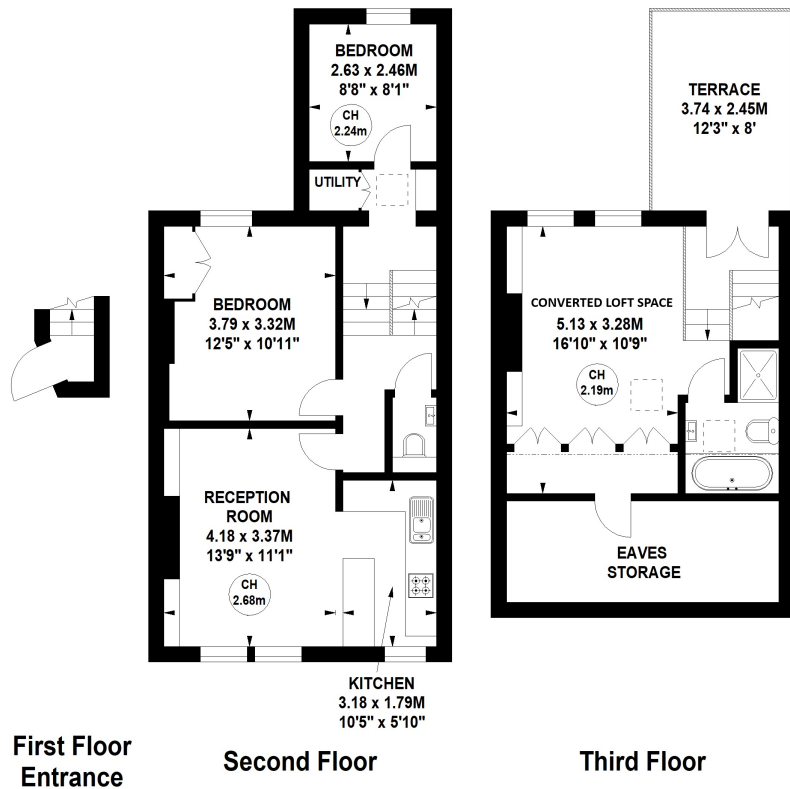
91.23 sq m / 982 sq ft

(Including Eaves Storage)

Eaves Storage

10.22 sq m / 110 sq ft

Key :
CH - Ceiling Height



Not to scale, for guidance only and must not be relied upon as a statement of fact.
All measurements and areas are approximate only



Spilt level maisonette | Superb condition throughout |
872 Sq' – 81.01 SqM | EPC rating C | Askew Village |
Two bedroom - Two bathroom apartment (plus
additional loft room/ bedroom)



hortonandgarton.co.uk
Sales 020 8819 0510
Lettings 020 8819 0511

172 King Street, Hammersmith, W6 0QU