

# TO LET

---

Ollgar Close,  
Shepherd's Bush, W12

---

Flat  
Shepherd's Bush

---

£1,650 pcm

---

1  1  1 



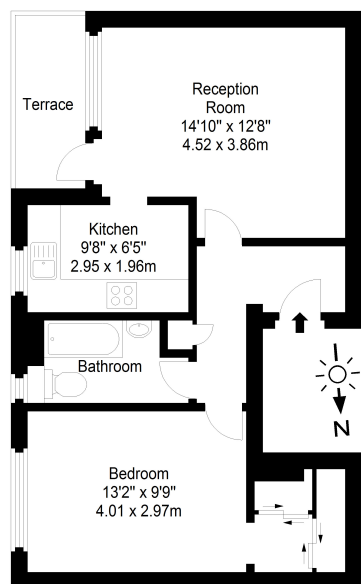
**horton  
andgarton**

SALES / LETTINGS / PROPERTY MANAGEMENT

hortonandgarton.co.uk | Sales 020 8819 0510 | Lettings 020 8819 0511  
172 King Street, Hammersmith, W6 0QU



# horton and garton



Third Floor

Ollgar Close, Shepherd's Bush, W12  
Gross Internal Area 531 sq ft - 49.33 sqm

Drawn from supplied plans. All measurements are approximate.  
This floor plan is for illustrative purposes only and is not to scale.  
© Horton and Garton Estate Agents 2020



One double bedroom | Balcony | Furnished | Recently redecorated | EPC rating D | Shepherds Bush



hortonandgarton.co.uk  
Sales 020 8819 0510  
Lettings 020 8819 0511

172 King Street, Hammersmith, W6 0QU