

FOR SALE

Bazalgette Court Great West Rd,
Hammersmith, W6

Flat
Riverside

£675,000 lh

2  2  1 

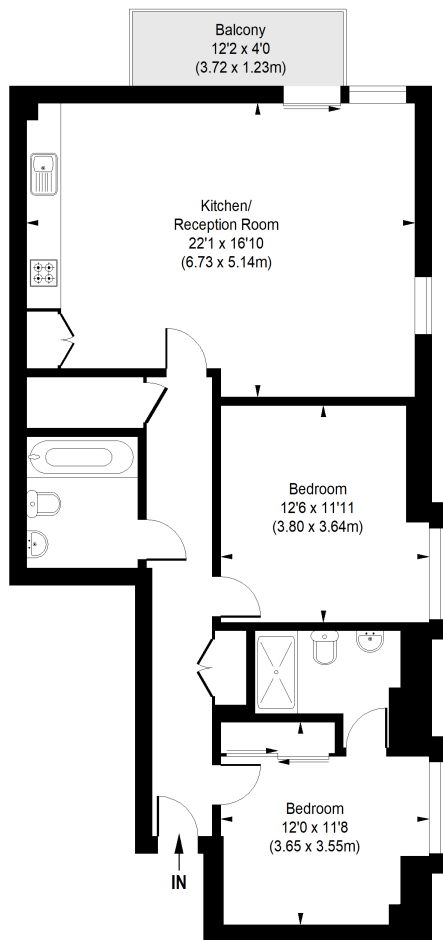


**horton
andgarton**

SALES / LETTINGS / PROPERTY MANAGEMENT

hortonandgarton.co.uk | Sales 020 8819 0510 | Lettings 020 8819 0511
172 King Street, Hammersmith, W6 0QU





SECOND FLOOR

**BAZALGETTE COURT,
GREAT WEST ROAD, W6**
APPROXIMATE GROSS INTERNAL AREA
881 Sq' / 81.84 SqM



Not to scale, for guidance only and must not be relied upon as a statement of fact.
All measurements and areas are approximate only



Second floor flat | Allocated off street parking | 881 Sq' - 81.84 SqM | EPC rating C | Two bedrooms - Two bathrooms | Riverside



hortonandgarton.co.uk
Sales 020 8819 0510
Lettings 020 8819 0511

172 King Street, Hammersmith, W6 0QU