

# FOR SALE

---

Hartington Road,  
Chiswick, W4

---

Semi-Detached House  
Grove Park

---

£875,000 fh

---

2  2  1 

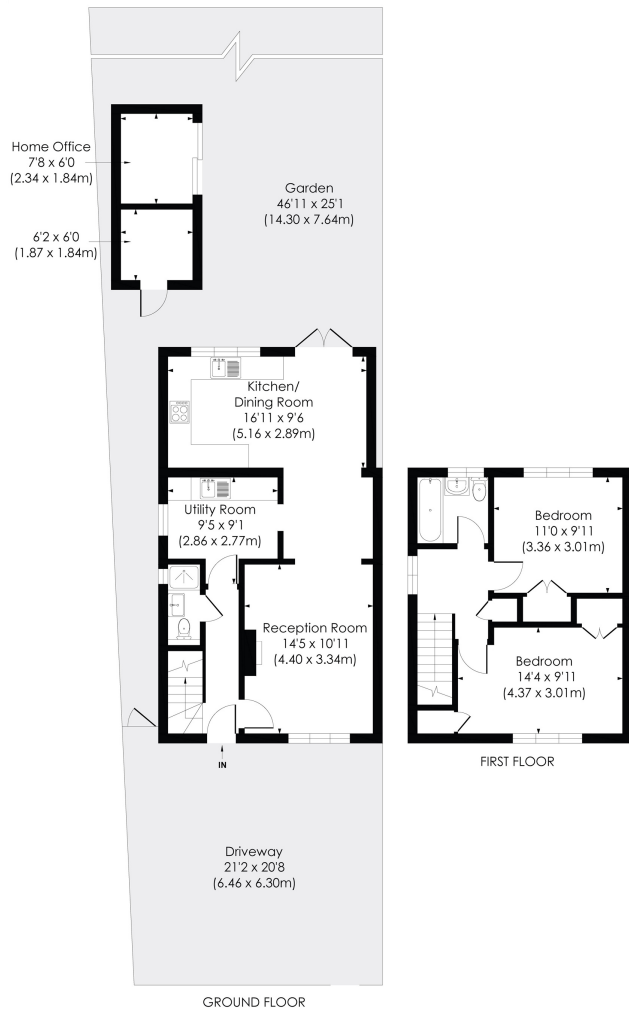


**horton  
andgarton**

SALES / LETTINGS / PROPERTY MANAGEMENT

hortonandgarton.co.uk | Sales 020 3989 6464 | Lettings 020 3989 5454  
161 Chiswick High Road, London, W4 2DT





### THE LINDENS, W4

Approx. Gross Internal Floor Area  
**1042 Sq' / 96.82 SqM** (Including Outbuilding)  
**955 Sq' / 88.72 SqM** (Excluding Outbuilding)

© Pixangle Property Marketing Ltd. info@pixangle.com Tel: 0208 870 2118

**horton  
andgarton**

This floor plan has been prepared for the purpose of illustration only in accordance with the latest RICS code of measuring practice and is not to scale. All measurements and areas are approximate and whilst every effort has been made to ensure the accuracy of the plan contained here, no responsibility is taken for any error, omission or misstatement.



Freehold family home | Two bedrooms - Two bathrooms  
 | 1042Sq' - 96.8 SqM | Off street parking for two cars |  
 EPC rating D | Grove Park



hortonandgarton.co.uk

Sales 020 3989 6464

Lettings 020 3989 5454

161 Chiswick High Road, London, W4 2DT