

# FOR SALE

---

Overstone Road,  
Hammersmith, W6

---

Flat  
Brackenbury Village

---

£600,000 sh of fh

---

2  1  1 



**horton  
andgarton**

SALES / LETTINGS / PROPERTY MANAGEMENT

hortonandgarton.co.uk | Sales 020 8819 0510 | Lettings 020 8819 0511  
172 King Street, Hammersmith, W6 0QU



# FOR SALE

---

Overstone Road,  
Hammersmith, W6

---

Flat  
Brackenbury Village

---

£600,000 sh of fh

---

2  1  1 



**horton  
andgarton**

SALES / LETTINGS / PROPERTY MANAGEMENT

hortonandgarton.co.uk | Sales 020 8819 0510 | Lettings 020 8819 0511  
172 King Street, Hammersmith, W6 0QU



# FOR SALE

Overstone Road,  
Hammersmith, W6

Flat  
Brackenbury Village

£600,000 sh of fh

2  1  1 

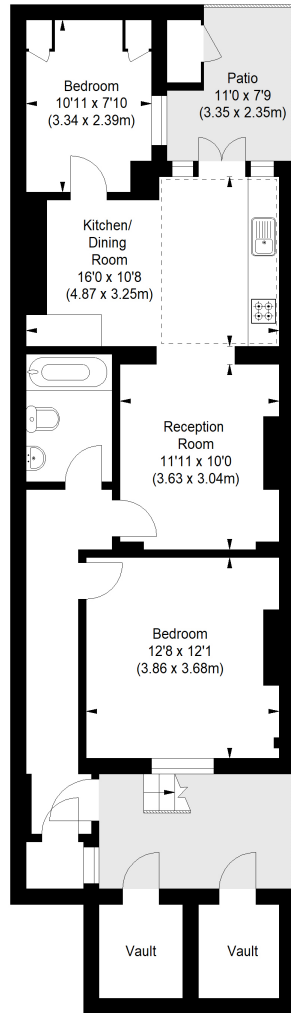


**horton  
andgarton**

SALES / LETTINGS / PROPERTY MANAGEMENT

hortonandgarton.co.uk | Sales 020 8819 0510 | Lettings 020 8819 0511  
172 King Street, Hammersmith, W6 0QU





LOWER GROUND FLOOR



**OVERSTONE ROAD, W6**

APPROXIMATE GROSS INTERNAL AREA

692 Sq' / 64.29 SqM

Vaults : 67 Sq' / 6.22 SqM

**Total : 759 Sq' / 70.51 SqM**

Not to scale, for guidance only and must not be relied upon as a statement of fact.  
All measurements and areas are approximate only



Victorian garden flat | East facing garden | 692 Sq' – 64.29 SqM | EPC rating C | Two bedrooms - One bathroom | Brackenbury Village



hortonandgarton.co.uk

Sales 020 8819 0510

Lettings 020 8819 0511

172 King Street, Hammersmith, W6 0QU