

FOR SALE

Westcroft Square,
London , W6

Flat
London

£775,000 lh

2  1  1 

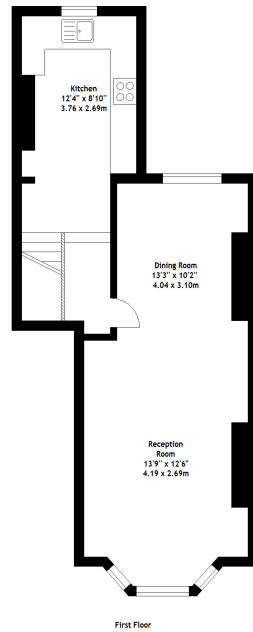
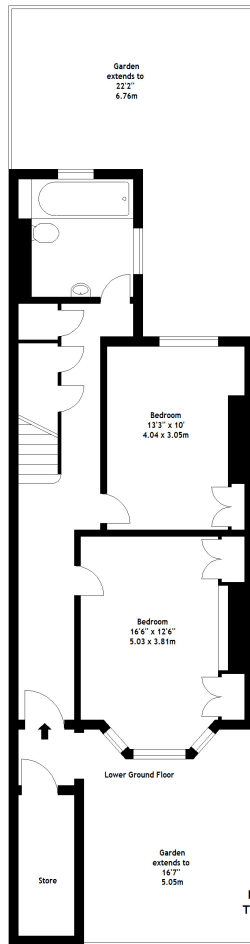


**horton
andgarton**

SALES / LETTINGS / PROPERTY MANAGEMENT

hortonandgarton.co.uk | Sales 020 8819 0510 | Lettings 020 8819 0511
172 King Street, Hammersmith, W6 0QU





Westcroft Square, W6
 Gross Internal Area 1074 sq ft - 99.7 sq m
 Drawn from supplied plans. All measurements are approximate.
 This floor plan is for illustrative purposes only and is not to scale.
 © Horton and Garton Estate Agents 2015



Split level maisonette | 1074 Sq' – 99.7 SqM | Two bedrooms - One bathroom | Private garden | Ravenscourt Park | EPC rating D



hortonandgarton.co.uk
 Sales 020 8819 0510
 Lettings 020 8819 0511

172 King Street, Hammersmith, W6 0QU