

FOR SALE

Samels Court,
Hammersmith, W6

Flat
Riverside

£500,000 sh of fh

2  1  1 

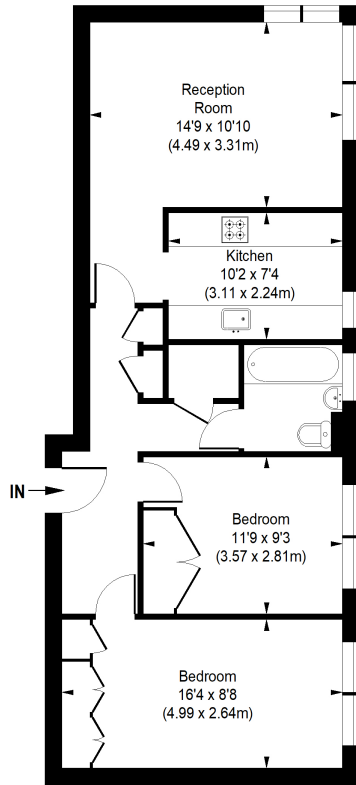


**horton
andgarton**

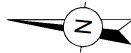
SALES / LETTINGS / PROPERTY MANAGEMENT

hortonandgarton.co.uk | Sales 020 8819 0510 | Lettings 020 8819 0511
172 King Street, Hammersmith, W6 0QU





FIRST FLOOR



SAMELS COURT, W6

APPROXIMATE GROSS INTERNAL AREA
675 Sq' / 62.71 SqM



Not to scale, for guidance only and must not be relied upon as a statement of fact.
All measurements and areas are approximate only



Purpose built apartment | Off-street parking | 675 Sq' - 62.71 SqM | EPC rating E | Two bedrooms - one bathroom | Riverside



hortonandgarton.co.uk
Sales 020 8819 0510
Lettings 020 8819 0511

172 King Street, Hammersmith, W6 0QU