

FOR SALE

Chiswick High Road,
Chiswick, W4

Flat
West London

£795,000 lh

2  2  1 

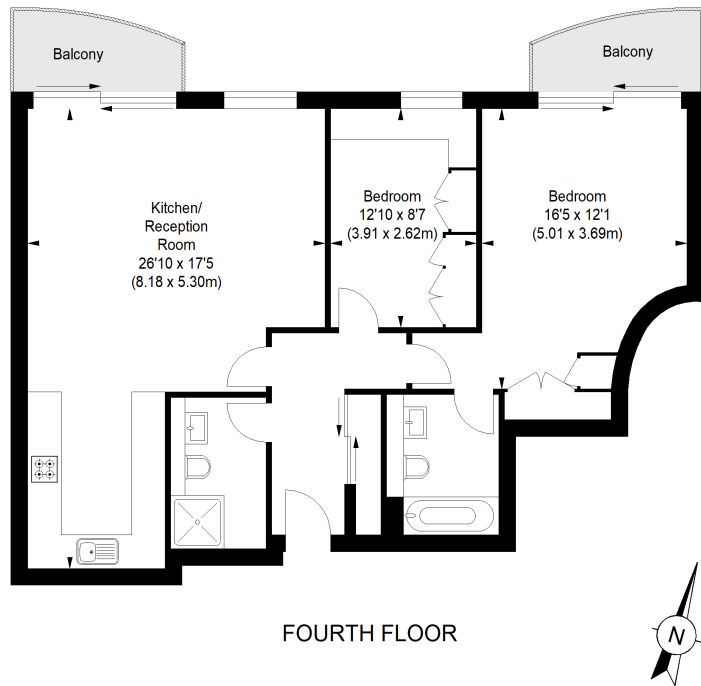


**horton
andgarton**

SALES / LETTINGS / PROPERTY MANAGEMENT

hortonandgarton.co.uk | Sales 020 3989 6464 | Lettings 020 3989 5454
161 Chiswick High Road, London, W4 2DT





CHISWICK HIGH ROAD, W4

APPROXIMATE GROSS INTERNAL AREA

Total : 880 Sq' / 81.75 SqM

Not to scale, for guidance only and must not be relied upon as a statement of fact.
All measurements and areas are approximate only



Purpose built Development | Two bedrooms - Two bathrooms | 880 Sq' – 81.75 SqM | Two Roof Terraces | EPC rating C | Chiswick



hortonandgarton.co.uk

Sales 020 3989 6464

Lettings 020 3989 5454

161 Chiswick High Road, London, W4 2DT