

# FOR SALE

---

Second Floor Flat Stowe Road,  
Shepherd's Bush , W12

---

Flat  
West London

---

£400,000 sh of fh

---

1  1  1 

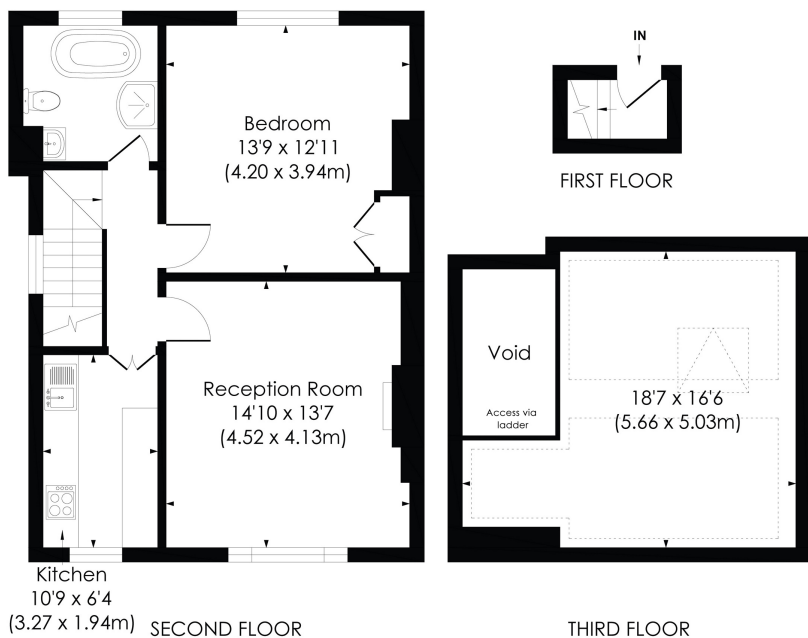


**horton  
andgarton**

SALES / LETTINGS / PROPERTY MANAGEMENT

hortonandgarton.co.uk | Sales 020 8819 0510 | Lettings 020 8819 0511  
172 King Street, Hammersmith, W6 0QU





### STOWE ROAD, W12

Approx. Gross Internal Floor Area  
**854 Sq' / 79.30 SqM** (Including Loft Room)  
**595 Sq' / 55.30 SqM** (Excluding Loft Room)

**horton  
andgarton**

© Pixangle Property Marketing Ltd. info@pixangle.com Tel: 0208 870 2118  
This floor plan has been prepared for the purpose of illustration only in accordance with the latest RICS code of measuring practice and is not to scale. All measurements and areas are approximate and whilst every effort has been made to ensure the accuracy of the plan contained here, no responsibility is taken for any error, omission or misstatement.



Victorian conversion | One bedroom - One bathroom |  
595 Sq' - 55.30 SqM | Chain free | EPC rating D |  
Shepherd's Bush



hortonandgarton.co.uk  
Sales 020 8819 0510  
Lettings 020 8819 0511

172 King Street, Hammersmith, W6 0QU