

FOR SALE

Flat 1 Bloemfontein Road,
Shepherd's Bush, W12

Flat
West London

£750,000 lh

3  2  1 

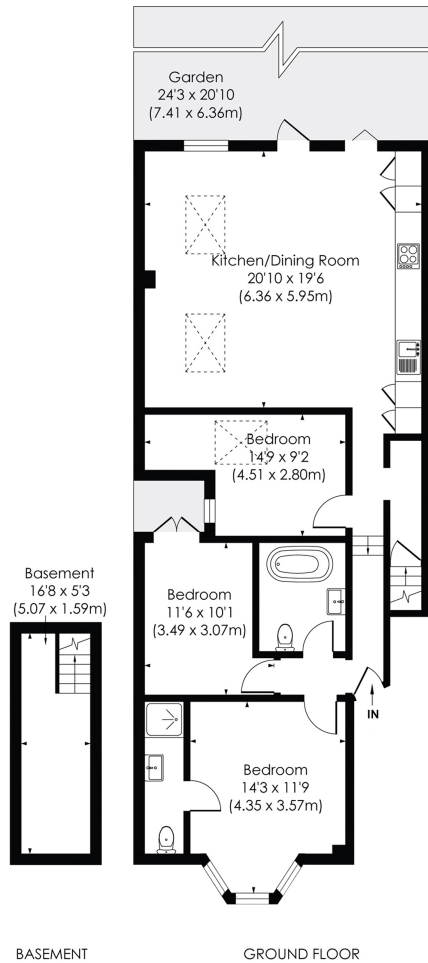


**horton
andgarton**

SALES / LETTINGS / PROPERTY MANAGEMENT

hortonandgarton.co.uk | Sales 020 8819 0510 | Lettings 020 8819 0511
172 King Street, Hammersmith, W6 0QU





BLOEMFONTEIN ROAD, W12

Approx. Gross Internal Floor Area

1110 Sq' / 103.14 SqM (incl. Basement)

1023 Sq' / 95.08 SqM (excl. Basement)

© Pixangle Property Marketing Ltd. info@pixangle.com Tel: 0208 870 2118

This floor plan has been prepared for the purpose of illustration only in accordance with the latest RICS code of measuring practice and is not to scale. All measurements and areas are approximate and whilst every effort has been made to ensure the accuracy of the plan contained here, no responsibility is taken for any error, omission or misstatement.

**horton
andgarton**



Victorian conversion | 24'3 East-facing garden | 1023 Sq' – 95.08 SqM | EPC rating C | Three bedrooms - Two bathrooms | Shepherd's Bush



hortonandgarton.co.uk

Sales 020 8819 0510

Lettings 020 8819 0511

172 King Street, Hammersmith, W6 0QU